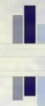




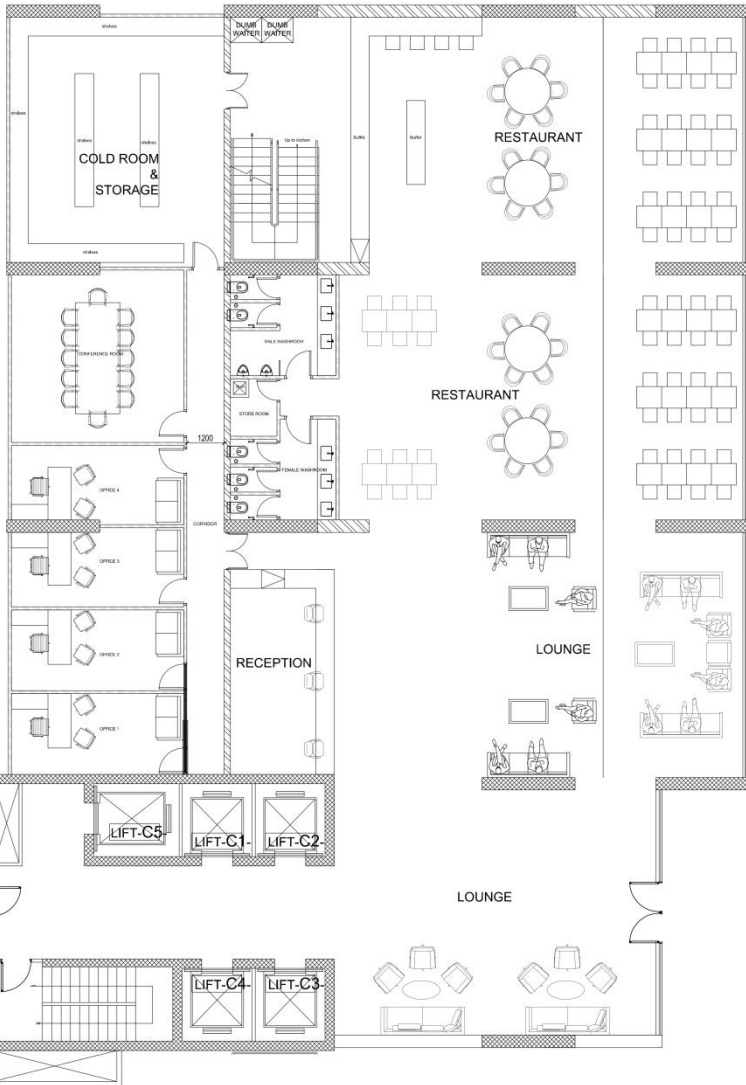
# LUXURY APART/HOTEL

concept

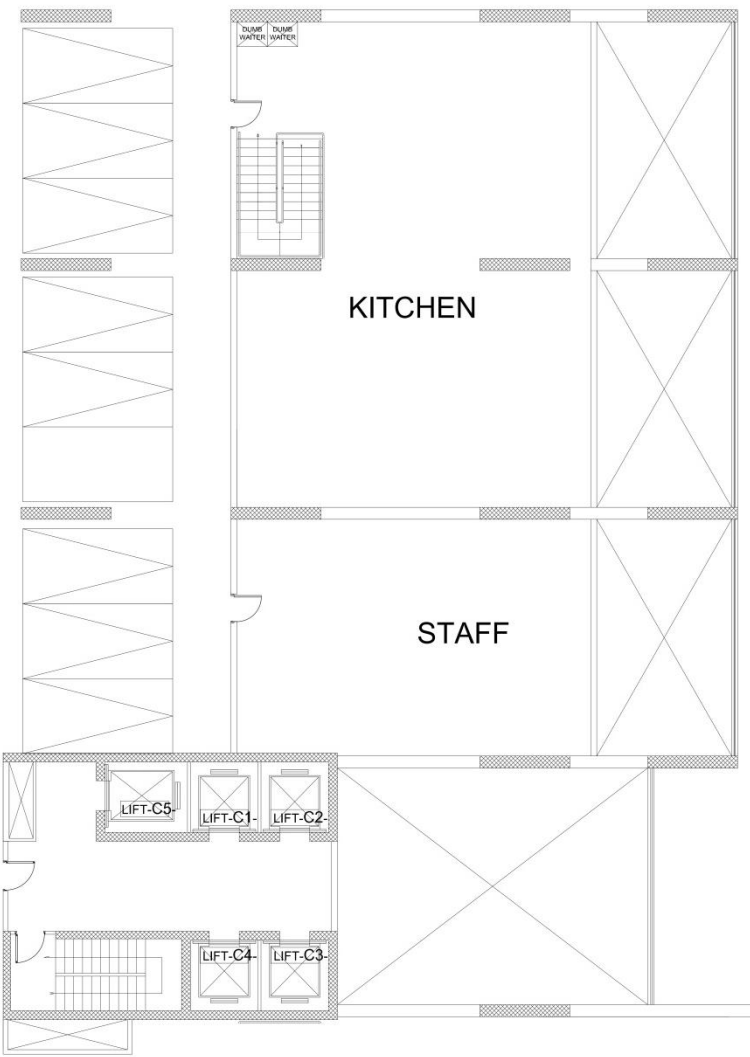


DREAM REALTY

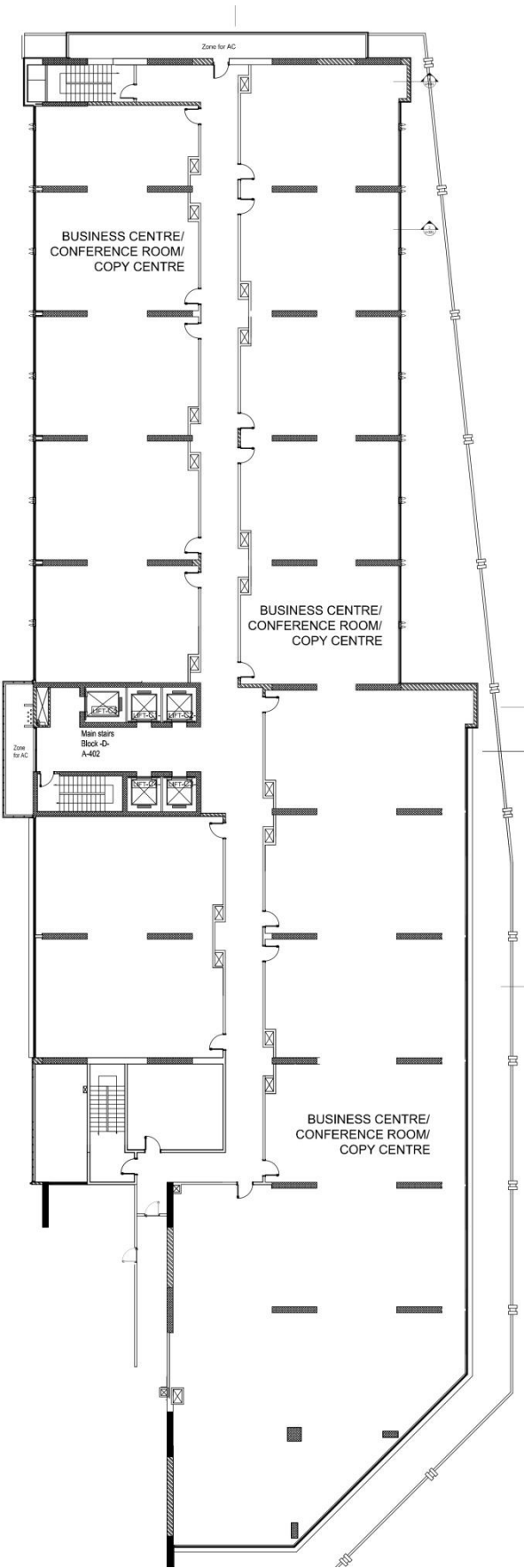
# Ground floor plan



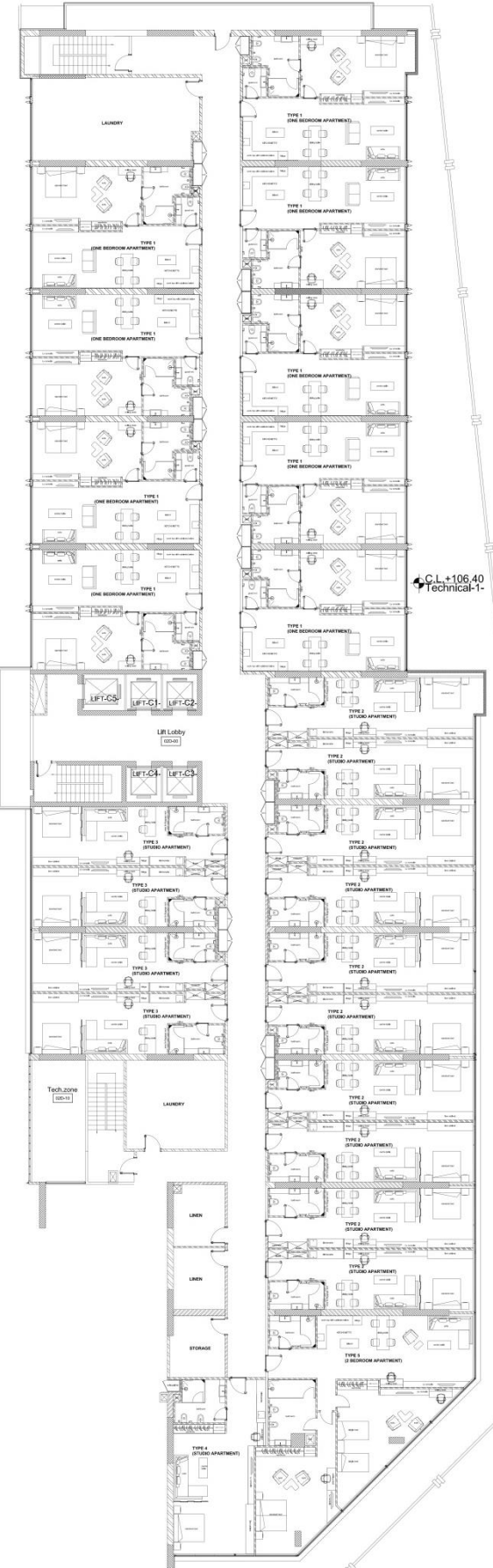
■ Mezzanine floor



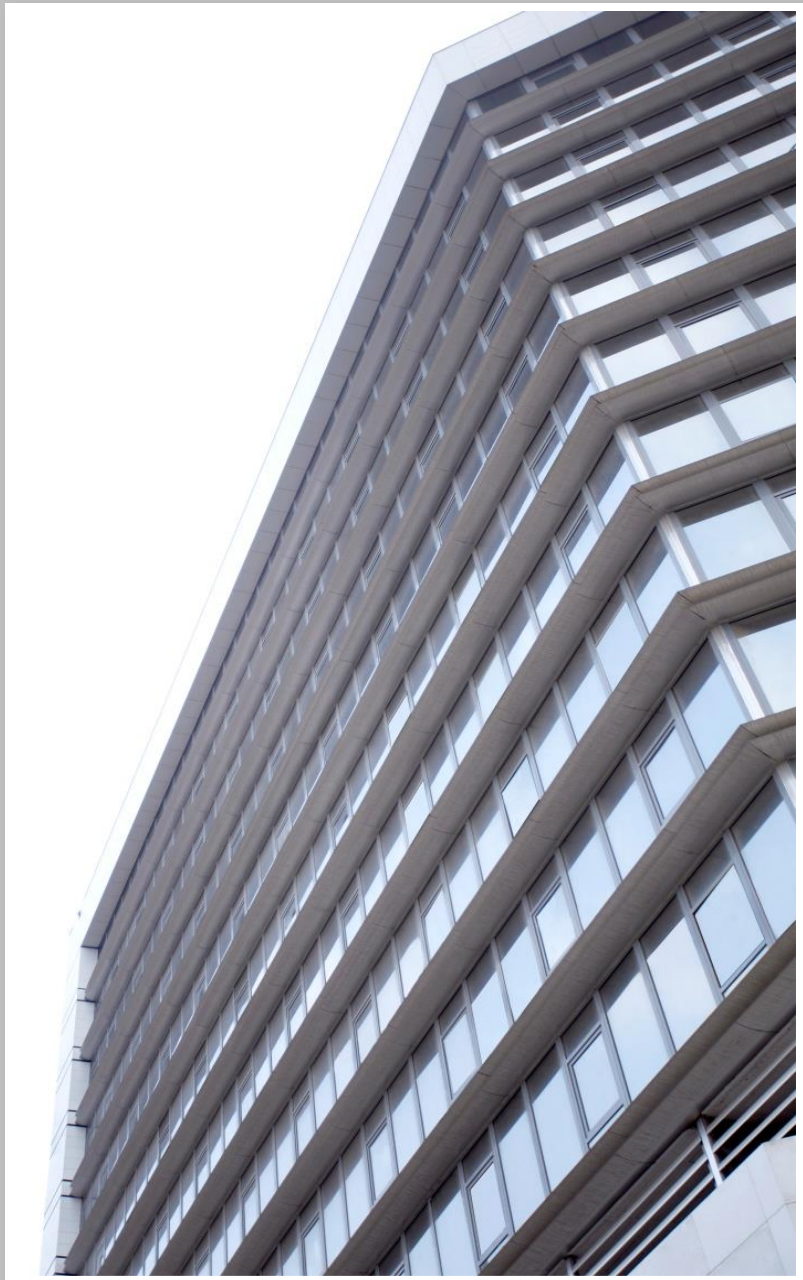
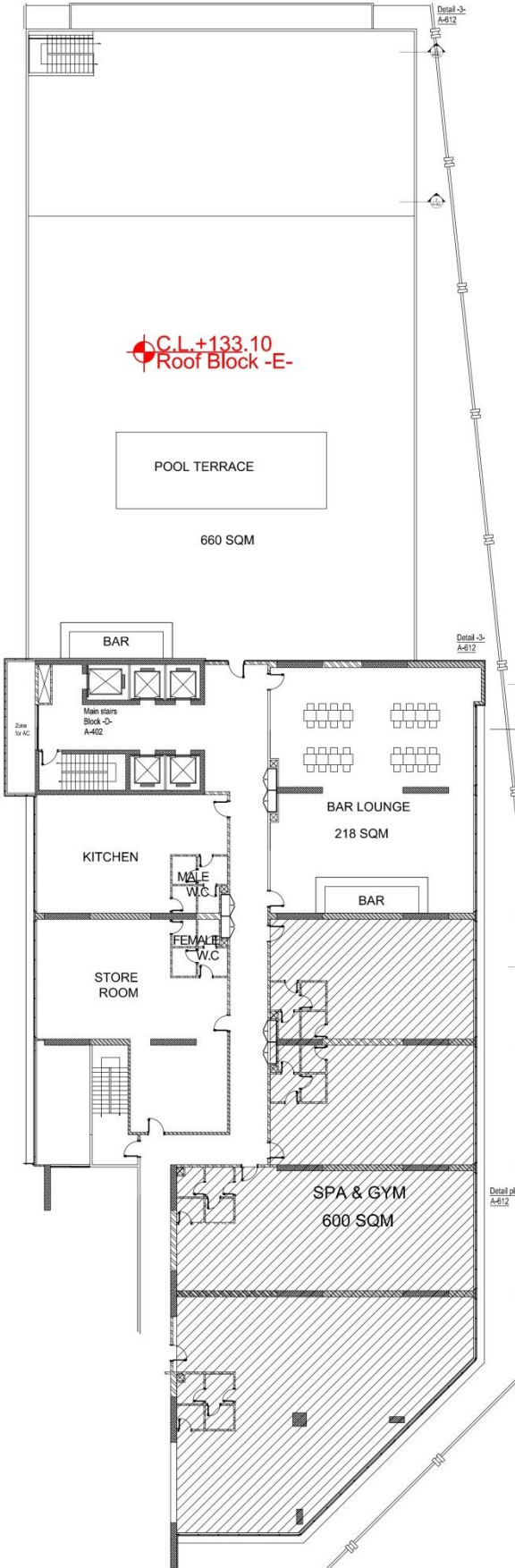
# 1st floor



# Typical floor (floors 2-8)



# 9th floor

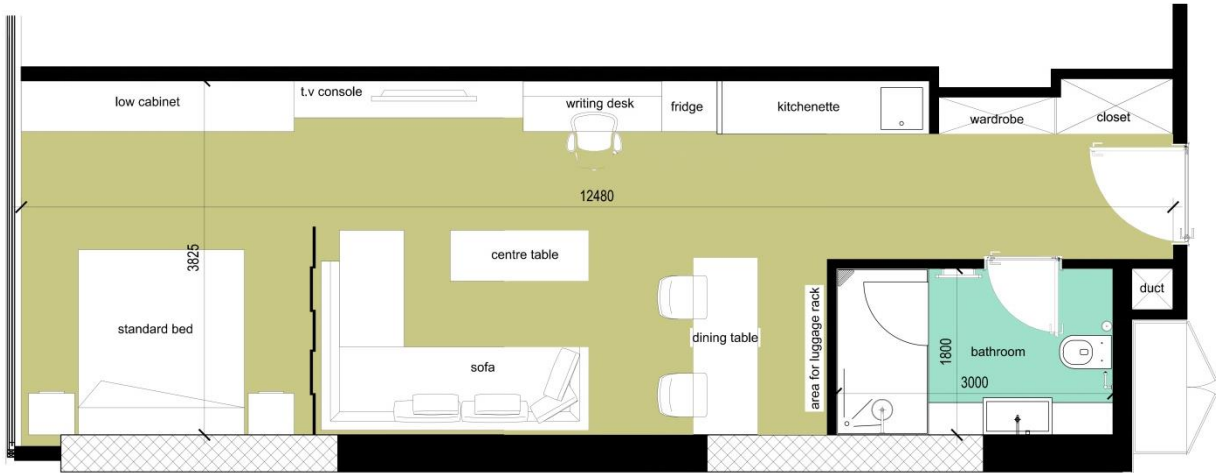


# 10<sup>th</sup> floor

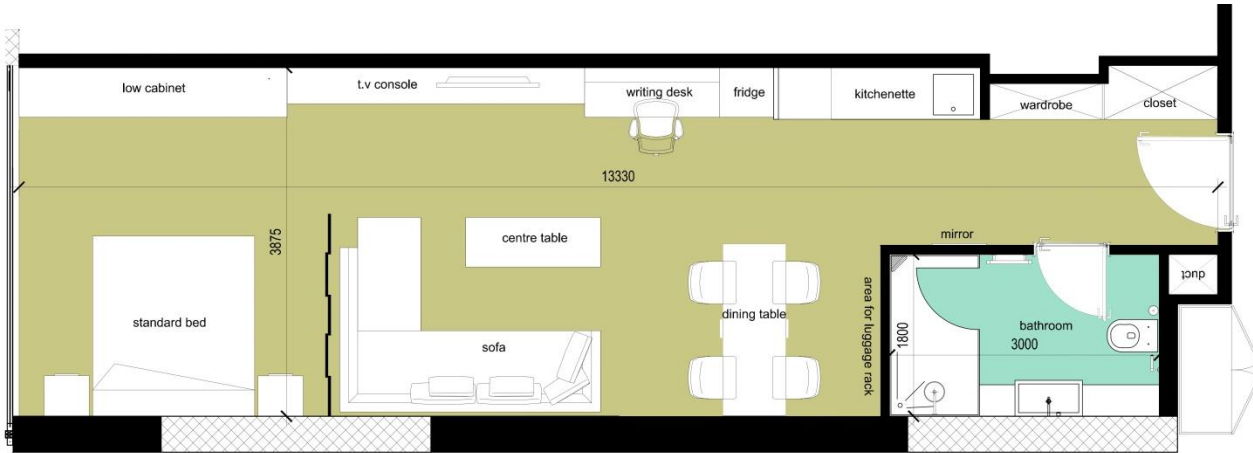


# Studio plan

48 sqm



52 sqm



61 sqm





# Apt Plans

## one bedroom



## two bedroom



## ■ Areas overview

### Ground Floor: 670 sqm

- Entrance Lobby 230 sqm
- Restaurant 260 sqm
- Back Office 120 sqm
- Store/cold room 60 sqm

- 1 two-bedroom apartment 146 sqm
- 3 storage rooms
- 1 laundry room
- Corridor 85 sqm (2.5 meters width)

### Mezzanine Floor: 285 sqm

- Kitchen 190 sqm
- Cold Room 95 sqm

### Total Keys: 216

- 72 One-bedroom apartments
- 135 studios
- 9 Two-bedroom apartments

### T1 Level: 9500 sqm

- Parking 250 cars
- Storage, staff rooms, wc ....

### First floor (Garden Level): 1270 sqm

- Business Center
- Conference rooms
- Copy center

### Second to eights floor: 1270 sqm each (typical floor):

- 9 One bedroom Apartments 85 sqm each
- 4 studios 48 sqm each
- 10 studios 52 sqm each
- 1 studio 61 sqm
- 1 two-bedroom apartment 146 sqm
- 3 storage Rooms
- 2 Laundry rooms
- Corridor 220 sqm (2.5 meter width)

### Ninth floor: 1140 sqm Plus terrace

- Bar lounge 220 sqm
- Kitchen 90 sqm
- Store 100 sqm
- Spa/Gym 605 sqm
- Corridor 85 sqm
- Wc 40 sqm
- Pool terrace and Bar 660 sqm

### Tenth Floor: 1140 sqm

- 4 studios 48 sqm each
- 10 studios 52 sqm each
- 1 studio 61 sqm